

HXL-Series II , Vacuum / Pressure Pumps

HXL400WV

◆ Solid 6 Vane Rotor Design

- Higher Airflow Efficiency.
- Higher Dead Head Vacuum.
- Less Vane Wear.
- Less Cylinder Wear.
- Less Noise.
- Less Vibration.

◆ Liquid Cooled Design

- Prevents Winter Freeze-ups.
- Allows Pump to Operate @ 25"Hg Continuously.
- Reliable Operation Under Extreme Hot or Cold Weather Conditions.

◆ Mechanical Oil Pump

- Automatic Oiling.
- No Adjustment Required.
- Delivers Right Amount of Oil at All Working Levels.

◆ End Thrust Protection

- Prevents Rotor-to-Endcover Contact Created by Direct P.T.O. Drive or Misaligned Belt Driven Systems.

◆ Double End Shaft

- Accommodates Clockwise or Counter-Clockwise Drive Systems.

◆ Integral Valve

- Allows Pump to Operate in Vacuum and Pressure Mode.



◆ Masport Quality & Performance

- Achieve Minimum 27" Hg (Intermittent).
- Bolt on Half Shafts.
- Precise Machining and Assembly.
- Heavy Duty Bearings.
- Viton Oil Seals for Longer Service Life.
- Kevlar Vanes are Heat Stabilized and Machined with Exacting Tolerances for Superior Ruggedness and Durability.
- Easy to Service.
- Superior Pump Life.

◆ Performance Warranty

- One Year Warranty.

PERFORMANCE DATA

Performance Data – Vacuum

Pump R.P.M.	Displacement C.F.M.	S.C.F.M. and A.C.F.M. @ VACUUM											Maximum Vacuum – “Hg	
			5	10	15	18	20	22	24	25	26	27	Continuous	Intermittent
1100	345	SCFM	269	204	150	120	100	80	57	47	35	25	25	27
		ACFM	323	306	300	300	300	300	300	282	263	250		
1275	400	SCFM	312	237	175	140	117	93	66	54	41	29	25	27
		ACFM	374	356	350	350	350	350	350	324	308	290		

Performance Data – Pressure

Pump R.P.M.	Displacement C.F.M.	S.C.F.M. @ P.S.I.G.							Maximum Pressure – P.S.I.G.	
		5	10	15	18	20	25	30	Continuous	Intermittent
1100	345	321	307	292	275	258	243	224	20	30
1275	400	372	356	339	319	300	282	264	20	30

Horsepower Required @ P.S.I.G.

Pump R.P.M.	P.S.I.G.					
	5	10	15	20	25	30
1100	20	24	28	32	35	42
1275	24	28	33	38	42	50

Horsepower Required @ “Hg

Pump R.P.M.	Vacuum “Hg		
	15	20	27
1100	15	16.5	17
1275	17.7	19.5	20.1

DIMENSIONAL DATA

HXL400WV Pump

	HXL400WV	HXL400WF
A	13 1/2	13 1/2
B	25 1/2	16 1/2
C	8 5/8	8 5/8
D	27 1/8	27 1/8
E	1 3/8	1 3/8
F	9 7/16	9 7/16
G	1/8	1/8
H	19 1/2	-----
J	9/16	9/16
K	5/16 x 5/16 x 2	5/16 x 5/16 x 2
L	7 7/16	7 7/16
M	1/4	1/4
N	3	2 1/2
O	7 1/4	7 1/4
P	3 5/16	3 5/16
Q	3 13/16	3 13/16
R	8 1/2	8 1/2
S	12 1/2	12 1/2
T	4 9/16	4 9/16
U	3 7/16	3 7/16
V	5	5
W	5	5
X	8 1/4	8 1/4
Y	8 1/4	8 1/4

ALL DIMENSIONS IN INCHES.

For additional information on these quality Masport Vacuum / Pressure Pumps contact:



MASPORT INCORPORATED

6140 McCormick Drive

Lincoln, Nebraska 68507

Ph: 402-466-8428 Fax: 402-466-8355

E-Mail: masport.sales@alltel.net

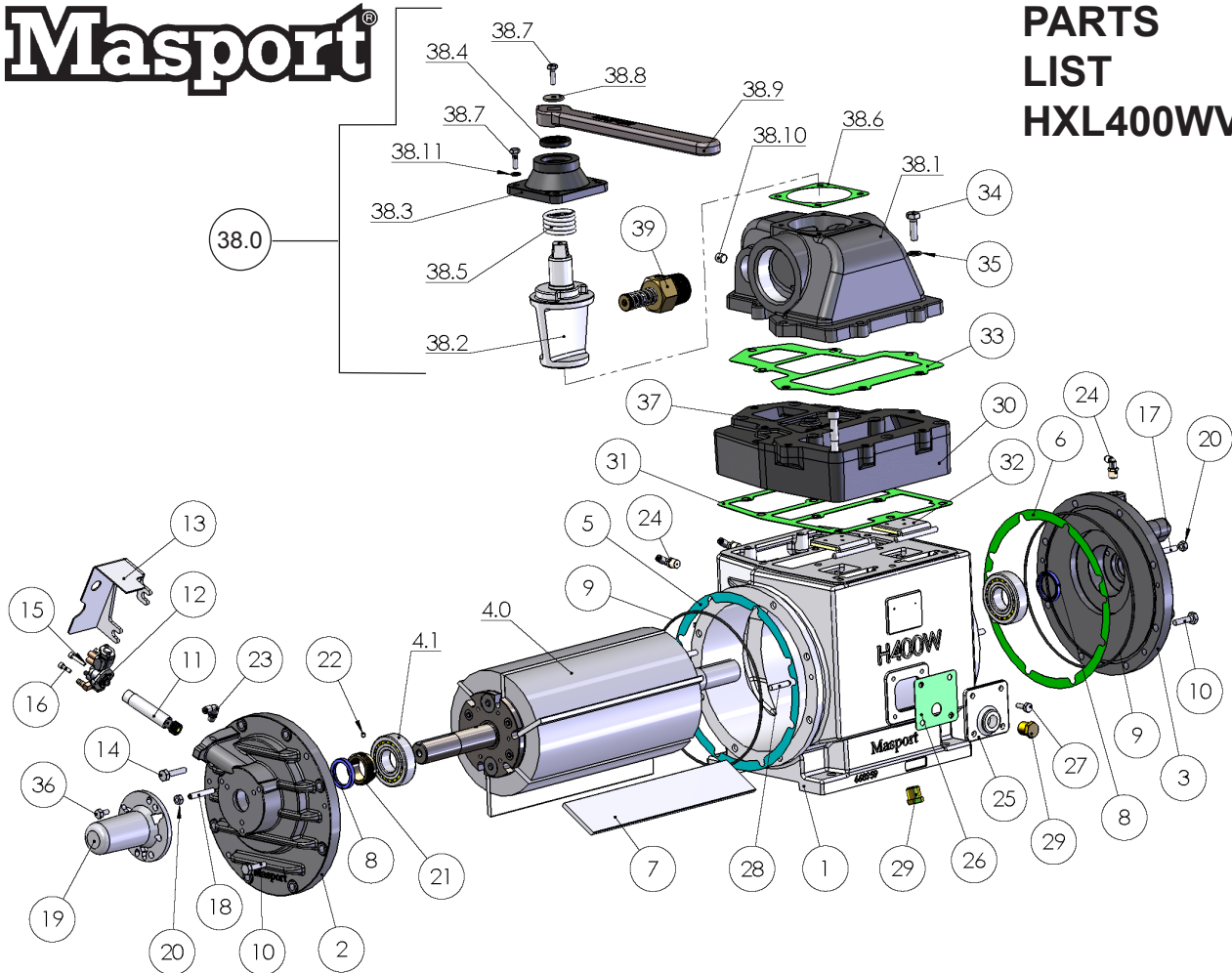
Web: www.masportpump.com

CALL TOLL FREE 800-228-4510



Masport®

PARTS LIST HXL400WV



HXL400WV LIQUID COOLED PRESSURE / VACUUM PUMP PARTS LIST (968980)

Ref.	Description	Part No.	Qty.	Ref.	Description	Part No.	Qty.
1.	Cylinder	968959	1	26.	Gasket Side Plate	568232	1
2.	Endcover - Oil Pump End	968976	1	27.	Screw Set Hex M8 x 20	501848	4
3.	Endcover - Hyd. Drive End	968971	1	28.	Dowel Pin	503261	4
4.0	Rotor Assembly w/ bearings	968967	1	29.	Plug 1/2" BSPT Brass	147621	2
4.1	Bearing	503098	2	30.	Manifold	968846	1
5 & 6	Shim - Endcover			31.	Gasket Manifold	568805	1
	.002" Blue (quantity varies)	542011	**	32.	Flap Assembly	968026	2
	.003" Green (quantity varies)	542012	**	33.	Valve Gasket	568884	1
7.	Vane Pack (6)	968918	1	34.	Set Screw Hex M12 x 35	501666	7
8.	Seal	501015	2	35.	Washer Spring	500203	7
9.	End Cover O-Ring	501677	2	36.	Set Screw Hex M8 x 16	501571	3
10.	Set Screw Hex M10 x 35	501878	14	37.	Screw Cap M12 x 80 HT	501965	10
11.	Drive Shaft Assembly	968045	1	38.0	Integral Valve Assembly	968887	1
12.	Pump - Oil	568437	1	38.1	Body Valve 3" NPT	968883	1
13.	Oil Pump Guard	568903	1	38.2	Spool Valve	968804	1
14.	Screw Set Hex M10 x 40	501584	2	38.3	Valve Cap	968035	1
15.	Screw Cap M5 x 25 HT	504261	1	38.4	Seal	501674	1
16.	Screw Cap M5 x 16 HT	504262	1	38.5	Spring Valve	568038	1
17.	Screw Grub M8 x 35	504276	3	38.6	Gasket Cap	568044	1
18.	Screw Grub M8 x 50	504287	3	38.7	Set Screw Hex M8 x 25	501598S	5
19.	Shaft Cap	568622	1	38.8	Washer 5/16" x 1 1/4" x 1/8"	501550	1
20.	Nut M8 Hex Binx Zp	504278	6	38.9	Handle Valve Long	968037	1
21.	Worm Gear	568158	1	38.10	Plug - 1/4"	27300	1
22.	Screw Grub M5 x 6	504264	1	38.11	Washer Spring	501610	4
23.	Elbow Swivel 1/8"	568085	1	39	1 1/2" Relief Valve	25056	1
24.	Elbow Swivel 1/4"	568086	3	*	Oil Line Tube	600293	**
25.	Side Plate	968231	1				

* NOT SHOWN ** QUANTITY VARIES